

39/2014 - 14 March 2014

Fourth quarter of 2013 compared with third quarter of 2013

Employment up by 0.1% in euro area and EU28

-0.5% and -0.1% respectively compared with the fourth quarter of 2012

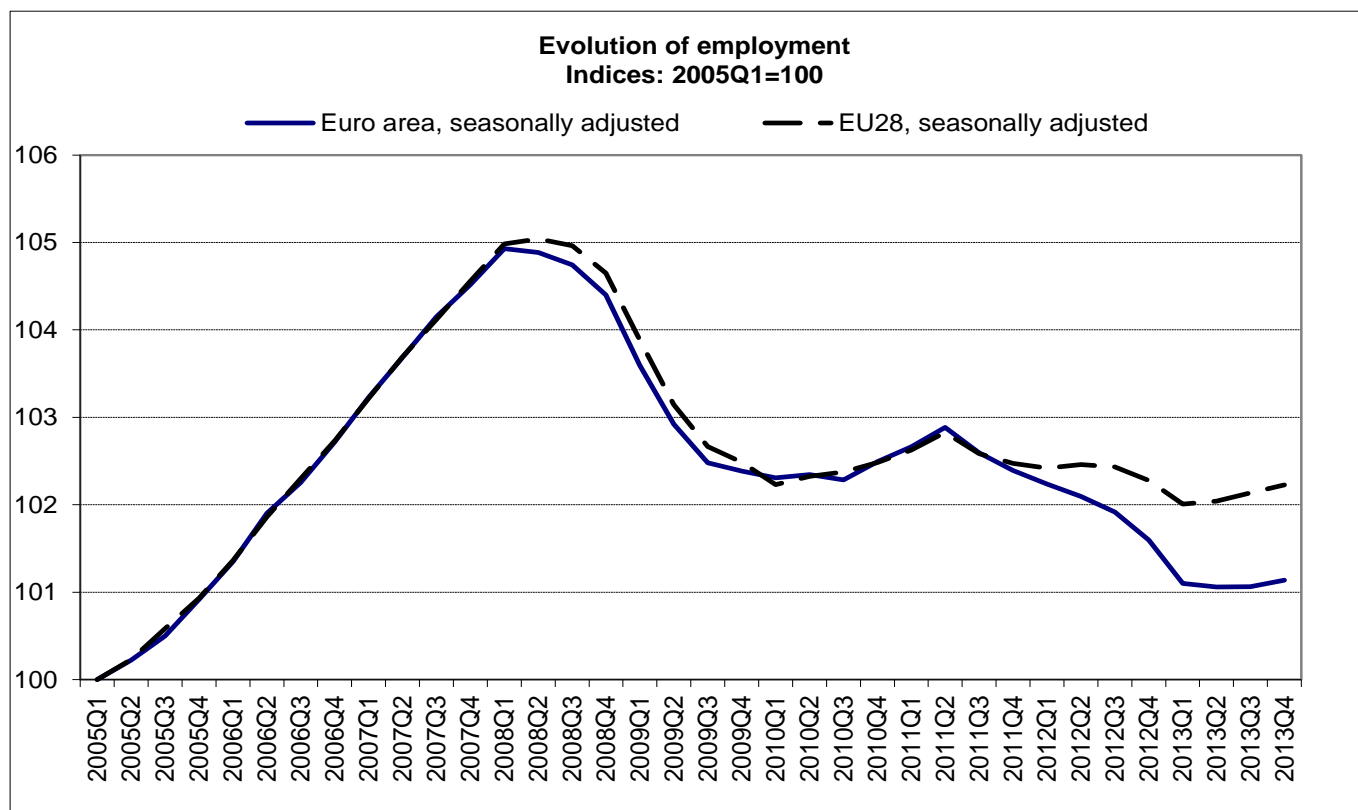
The number of persons employed¹ increased by 0.1% in both the **euro area**² (EA17) and the **EU28**² in the fourth quarter of 2013 compared with the previous quarter, according to national accounts estimates published by **Eurostat, the statistical office of the European Union**. In the third quarter of 2013, employment remained stable in the **euro area** and increased by 0.1% in the **EU28**. These figures are seasonally adjusted.

Compared with the same quarter of the previous year, employment fell by 0.5% in the **euro area** and by 0.1% in the **EU28** in the fourth quarter of 2013 (after -0.8% and -0.3% respectively in the third quarter of 2013).

Over the whole year 2013, employment decreased by 0.9% in the **euro area** and by 0.4% in the **EU28**, compared with -0.7% and -0.2% respectively in 2012.

Eurostat estimates that, in the fourth quarter of 2013, 223.6 million men and women were employed in the **EU28**, of which 145.0 million were in the **euro area**. These figures are seasonally adjusted.

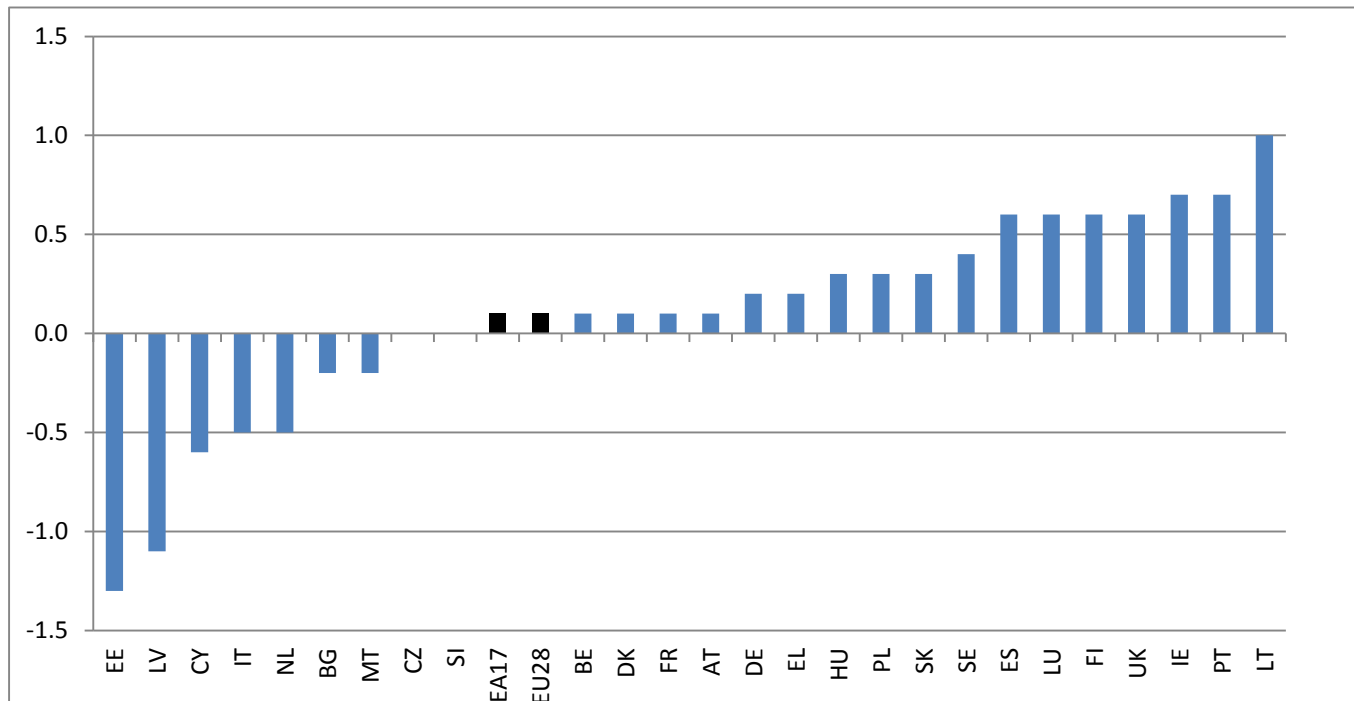
These quarterly data on employment provide a picture of labour input consistent with the output and income measure of national accounts.



Employment growth in Member States

Among Member States for which data are available, **Lithuania** (+1.0%), **Ireland** and **Portugal** (both +0.7%) recorded the highest increases in the fourth quarter of 2013 compared with the previous quarter, and **Estonia** (-1.3%), **Latvia** (-1.1%) and **Cyprus** (-0.6%) the largest decreases.

Member States' growth rates for employment in the fourth quarter of 2013
% change over the previous quarter, seasonally adjusted



1. Employment covers employees and self-employed working in resident production units (i.e. the domestic employment concept). Unless otherwise stated, all employment estimates in this release use *persons* as the measurement unit. ESA95 acknowledges other possible measures for employment: jobs, full-time equivalents and total hours worked. More information on employment in national accounts is available on Eurostat's website:
http://epp.eurostat.ec.europa.eu/portal/page/portal/national_accounts/methodology/employment.

2. Up to 31 December 2013, the euro area (EA17) included Belgium, Germany, Estonia, Ireland, Greece, Spain, France, Italy, Cyprus, Luxembourg, Malta, the Netherlands, Austria, Portugal, Slovenia, Slovakia and Finland. From 1 January 2014 the euro area (EA18) also includes Latvia.

The EU28 includes Belgium (BE), Bulgaria (BG), the Czech Republic (CZ), Denmark (DK), Germany (DE), Estonia (EE), Ireland (IE), Greece (EL), Spain (ES), France (FR), Croatia (HR), Italy (IT), Cyprus (CY), Latvia (LV), Lithuania (LT), Luxembourg (LU), Hungary (HU), Malta (MT), the Netherlands (NL), Austria (AT), Poland (PL), Portugal (PT), Romania (RO), Slovenia (SI), Slovakia (SK), Finland (FI), Sweden (SE) and the United Kingdom (UK).

As part of Eurostat's guidelines for the dissemination of data when the euro area is enlarged, the aggregate data series commented on in this News Release refer to the official composition in the most recent quarter for which data is available.

Thus News Releases with data for quarters up to the fourth quarter of 2013 comment on EA17 series, while Releases with data for the first quarter of 2014 onwards will comment on EA18 series.

Eurostat's guidelines can be found on the Eurostat website:

http://epp.eurostat.ec.europa.eu/cache/ITY_PUBLIC/GUIDE_ENLARG_2007/EN/GUIDE_ENLARG_2007-EN.PDF

Issued by: **Eurostat Press Office**

Tim ALLEN
Tel: +352-4301-33 444
eurostat-pressoffice@ec.europa.eu

For further information on data:

Christine GERSTBERGER
Tel: +352-4301-30 175
estat-gdp-query@ec.europa.eu

Eurostat news releases on the internet: <http://ec.europa.eu/eurostat>
Selected Principal European Economic Indicators: <http://ec.europa.eu/eurostat/euroindicators>

Employment growth rates*

	Percentage change compared with the previous quarter				Percentage change compared with the same quarter of the previous year			
	2013				2013			
	Q1	Q2	Q3	Q4	Q1	Q2	Q3	Q4
EA17	-0.5	0.0	0.0	0.1	-1.1	-1.1	-0.8	-0.5
EU28	-0.3	0.0	0.1	0.1	-0.5	-0.5	-0.3	-0.1
Member States								
Belgium	-0.2	-0.2	0.1	0.1	-0.2	-0.4	-0.2	-0.1
Bulgaria	0.0	0.3	-0.2	-0.2	-1.7	0.7	-0.1	-0.7
Czech Republic	0.7	0.4	-0.5	0.0	1.1	1.3	0.7	0.7
Denmark	0.1	0.4	0.1	0.1	-0.1	0.3	0.4	0.7
Germany	0.1	0.1	0.2	0.2	0.6	0.5	0.5	0.6
Estonia	2.3	1.4	-1.5	-1.3	2.3	3.0	1.3	0.8
Ireland	0.6	0.7	1.1	0.7	1.1	1.9	3.2	3.2
Greece	-2.3	0.1	-0.7	0.2	-6.5	-4.3	-2.9	-2.6
Spain	-1.0	-0.3	-0.4	0.6	-4.2	-3.6	-2.7	-1.3
France	-0.1	0.0	0.0	0.1	-0.2	-0.3	-0.3	-0.1
Croatia**	:	:	:	:	-1.1	-1.6	-1.6	:
Italy	-1.4	-0.3	0.1	-0.5	-1.6	-2.3	-2.0	-2.0
Cyprus	-1.0	-1.8	-1.2	-0.6	-4.8	-6.0	-6.0	-4.1
Latvia	0.5	0.4	-0.2	-1.1	3.9	3.9	1.8	-0.3
Lithuania	1.9	0.8	-1.3	1.0	1.2	1.0	0.8	2.3
Luxembourg	0.1	0.6	0.5	0.6	1.6	1.7	1.8	1.9
Hungary	0.1	0.5	0.1	0.3	0.0	0.2	0.6	1.0
Malta	0.6	0.9	1.3	-0.2	2.5	3.8	3.5	2.6
Netherlands	-0.3	-0.3	-0.3	-0.5	-0.9	-0.8	-1.0	-1.4
Austria	0.1	0.2	0.3	0.1	0.6	0.6	0.8	0.8
Poland	0.0	0.3	0.0	0.3	-0.5	-0.4	0.0	0.7
Portugal	-1.7	0.7	0.8	0.7	-5.2	-4.0	-2.4	0.5
Romania	:	:	:	:	-0.1	-0.1	-0.1	-0.4
Slovenia	-0.7	-0.3	0.0	0.0	-2.7	-2.5	-1.7	-1.0
Slovakia	-0.3	-0.2	0.2	0.3	-1.0	-1.3	-0.9	0.1
Finland	-0.7	0.0	-1.1	0.6	-1.4	-1.1	-1.8	-1.0
Sweden	0.4	0.2	0.3	0.4	0.8	0.8	1.0	1.2
United Kingdom	-0.1	0.2	0.6	0.6	1.4	1.0	1.3	1.4
EFTA countries								
Norway	0.3	0.3	0.4	0.5	1.9	1.4	1.2	1.4

: Data not available

* Percentage change in the number of persons employed in resident production units compared with the previous quarter based on seasonally adjusted data. Percentage change compared with the same quarter of the previous year based on non-seasonally adjusted data.

** Employment data based on national employment concept

T1 - TOTAL EMPLOYMENT AND EMPLOYMENT BY INDUSTRY

t/t-1 - PERCENTAGE CHANGE OVER THE PREVIOUS QUARTER – SEASONALLY ADJUSTED

NACE Rev 2	Total economy				Agriculture, forestry and fishing				Industry (mining, manufacturing, electricity, water and waste)				of which: Manufacturing				Construction				Trade, transport, accommodation and food service activities			
Section					A				B, C, D and E				C				F				G, H and I			
	2013				2013				2013				2013				2013				2013			
	Q1	Q2	Q3	Q4	Q1	Q2	Q3	Q4	Q1	Q2	Q3	Q4	Q1	Q2	Q3	Q4	Q1	Q2	Q3	Q4	Q1	Q2	Q3	Q4
EA17	-0.5	0.0	0.0	0.1	-1.4	1.6	-0.5	-0.5	-0.3	-0.4	-0.4	-0.1	-0.4	-0.4	-0.3	-0.2	-1.3	-0.9	-0.3	-0.3	-0.5	0.1	-0.1	0.2
EU28	-0.3	0.0	0.1	0.1	-1.5	1.6	-0.8	-0.9	-0.1	-0.5	-0.3	0.0	-0.2	-0.4	-0.2	0.0	-1.0	-0.4	0.0	0.0	-0.2	0.0	0.1	0.3

NACE Rev 2	Information and communication				Financial and insurance activities				Real estate activities				Professional and support service activities				Administration and other public services				Arts, entertainment and other services			
Section	J				K				L				M and N				O, P and Q				R, S, T and U			
	2013				2013				2013				2013				2013				2013			
	Q1	Q2	Q3	Q4	Q1	Q2	Q3	Q4	Q1	Q2	Q3	Q4	Q1	Q2	Q3	Q4	Q1	Q2	Q3	Q4	Q1	Q2	Q3	Q4
EA17	-0.3	0.1	0.0	0.5	-0.1	-0.2	0.0	0.0	-1.0	0.1	0.7	-0.9	-0.6	0.3	0.7	0.2	-0.3	-0.1	0.1	0.3	-0.4	0.1	-0.1	-0.4
EU28	0.0	0.0	-0.1	0.5	0.0	-0.4	0.1	0.3	0.6	1.1	1.5	-3.4	-0.1	0.4	0.8	0.0	-0.2	0.1	0.1	0.4	-0.1	-0.1	0.2	-0.3

T2 - TOTAL EMPLOYMENT AND EMPLOYMENT BY INDUSTRY

t/t-4 - PERCENTAGE CHANGE OVER THE SAME QUARTER OF THE PREVIOUS YEAR – NON-SEASONALLY ADJUSTED

NACE Rev 2	Total economy				Agriculture, forestry and fishing				Industry (mining, manufacturing, electricity, water and waste)				of which: Manufacturing				Construction				Trade, transport, accommodation and food service activities			
Section					A				B, C, D and E				C				F				G, H and I			
	2013				2013				2013				2013				2013				2013			
	Q1	Q2	Q3	Q4	Q1	Q2	Q3	Q4	Q1	Q2	Q3	Q4	Q1	Q2	Q3	Q4	Q1	Q2	Q3	Q4	Q1	Q2	Q3	Q4
EA17	-1.1	-1.1	-0.8	-0.5	-3.1	-1.8	-0.6	-0.8	-1.5	-1.4	-1.5	-1.2	-1.6	-1.5	-1.6	-1.2	-5.5	-5.7	-4.1	-2.9	-1.2	-1.0	-0.9	-0.3
EU28	-0.5	-0.5	-0.3	-0.1	-1.9	-1.1	-1.3	-2.1	-1.2	-1.2	-1.1	-0.7	-1.3	-1.3	-1.2	-0.7	-4.4	-4.1	-2.6	-1.4	-0.6	-0.6	-0.5	0.3

NACE Rev 2	Information and communication				Financial and insurance activities				Real estate activities				Professional and support service activities				Administration and other public services				Arts, entertainment and other services			
Section	J				K				L				M and N				O, P and Q				R, S, T and U			
	2013				2013				2013				2013				2013				2013			
	Q1	Q2	Q3	Q4	Q1	Q2	Q3	Q4	Q1	Q2	Q3	Q4	Q1	Q2	Q3	Q4	Q1	Q2	Q3	Q4	Q1	Q2	Q3	Q4
EA17	0.3	-0.1	0.6	0.3	-1.2	-1.2	-0.4	-0.3	-2.1	-3.2	-0.9	-1.0	0.3	0.1	0.2	0.6	-0.5	-0.5	-0.2	0.0	0.3	0.1	-0.4	-0.9
EU28	1.4	0.9	1.0	0.2	-0.5	-1.2	-0.4	0.1	0.0	1.3	3.6	0.1	1.4	1.2	1.1	1.1	-0.2	0.0	0.2	0.3	0.6	0.2	0.0	-0.3